

Logikub - acoperis Premium

Thermal protection

$U = 0,14 \text{ W/(m}^2\text{K)}$

EnEV Bestand*: $U < 0,24 \text{ W/(m}^2\text{K)}$



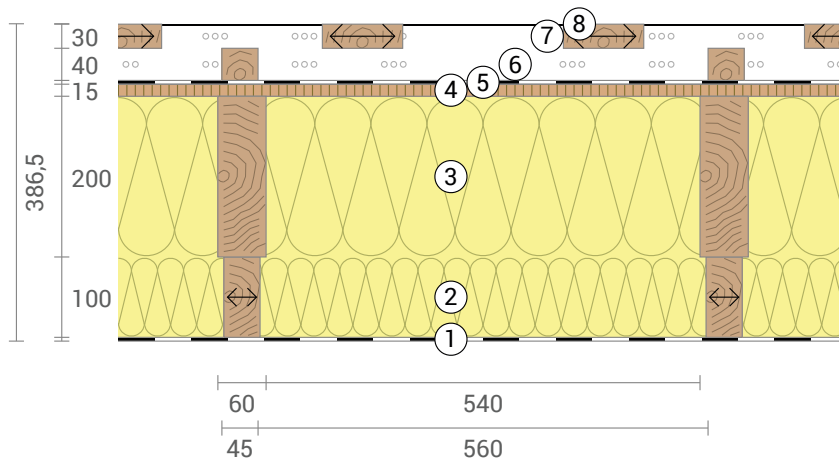
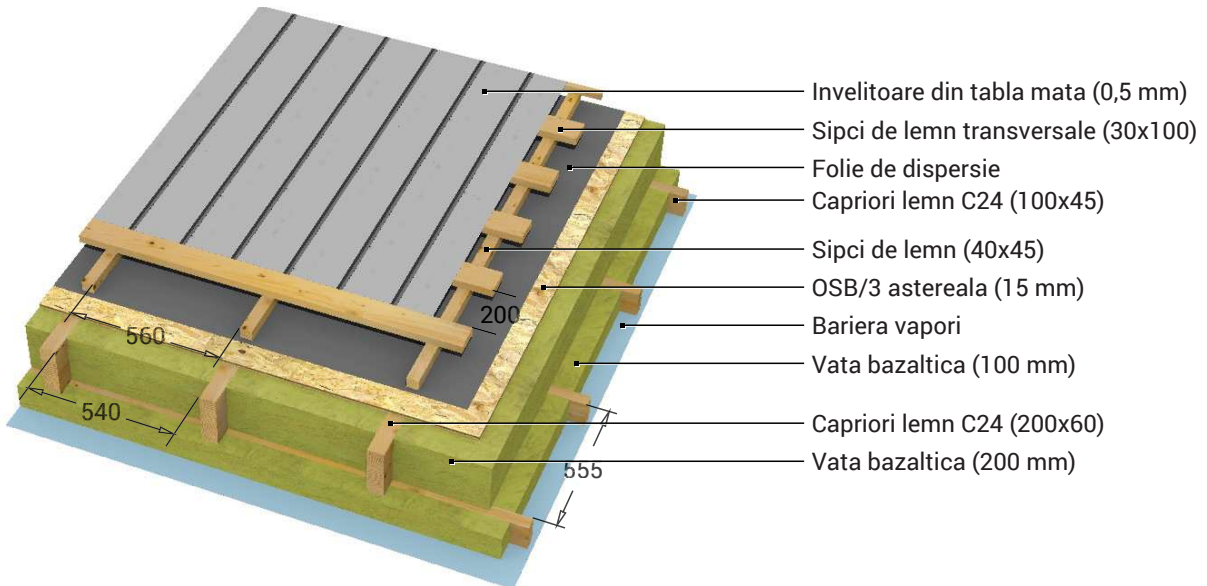
Moisture proofing

Drying reserve: 281 g/m²a
No condensate



Heat protection

Temperature amplitude damping: 4,3
phase shift: 8,5 h
Thermal capacity inside: 12 kJ/m²K



- ① Bariera vapori
- ② Vata bazaltica (100 mm)
- ③ Vata bazaltica (200 mm)
- ④ OSB/3 astereala (15 mm)
- ⑤ Folie de dispersie
- ⑥ Spatiu ventilat (40 mm)
- ⑦ Spatiu ventilat (30 mm)
- ⑧ Invelitoare din tabla mata (0,5 mm)

<-> Layers marked by arrows are perpendicular to the main axis.

Inside air : 20,0°C / 50%
Outside air: -5,0°C / 80%
Surface temperature.: 19,1°C / -4,9°C

sd-value: 95,0 m
Drying reserve: 281 g/m²a

Thickness: 38,6 cm
Weight: 47 kg/m²
Heat capacity: 45 kJ/m²K

- EnEV Bestand
- BEG Einzelmaßn.
- GEG 2020/24 Bestand
- GEG 2023/24 Neubau