

Logikub - perete exterior Premium

Exterior wall

Thermal protection

$U = 0,21 \text{ W/(m}^2\text{K)}$

EnEV Bestand*: $U < 0,24 \text{ W/(m}^2\text{K)}$



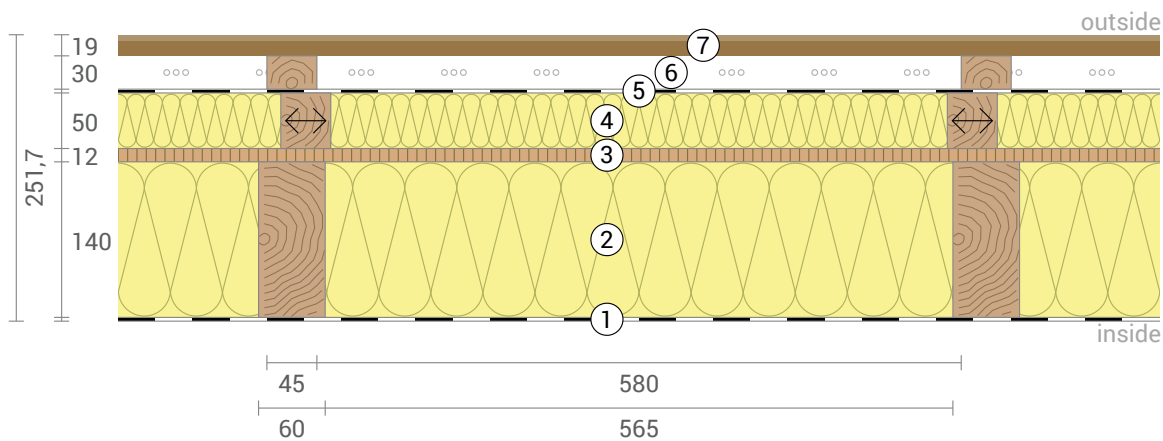
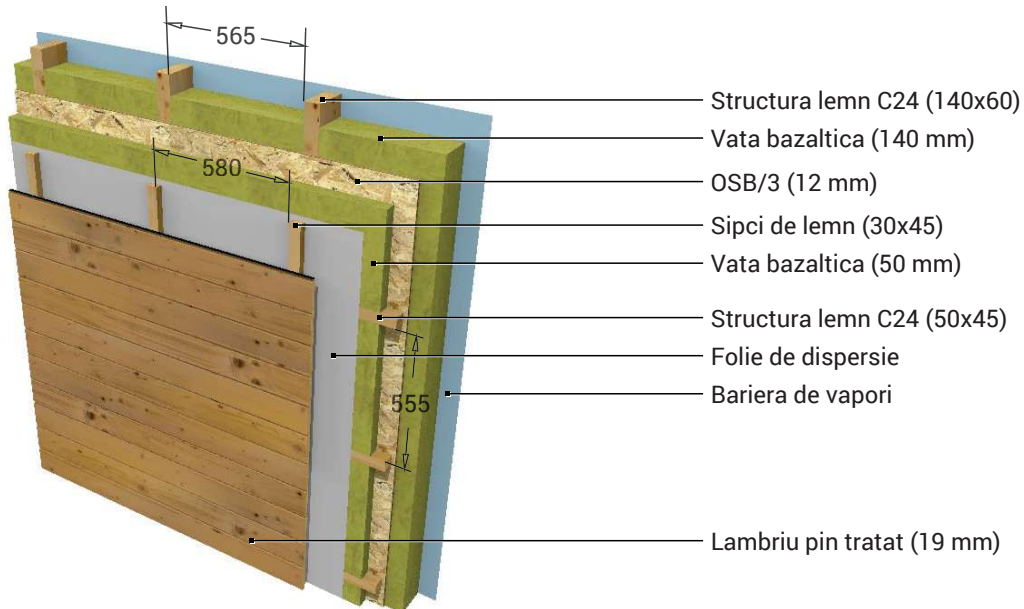
Moisture proofing

Drying reserve: $359 \text{ g/m}^2\text{a}$
No condensate



Heat protection

Temperature amplitude damping: 3,0
phase shift: 7,3 h
Thermal capacity inside: $14,9 \text{ kJ/m}^2\text{K}$



- ① Bariera de vapori
- ② Vata bazaltica (140 mm)
- ③ OSB/3 (12 mm)
- ④ Vata bazaltica (50 mm)
- ⑤ Folie de dispersie
- ⑥ Spatiu ventilat (30 mm)
- ⑦ Lambriu pin tratat (19 mm)

<-> Layers marked by arrows are perpendicular to the main axis.

Inside air : $20,0^\circ\text{C} / 50\%$
Outside air: $-5,0^\circ\text{C} / 80\%$
Surface temperature.: $17,5^\circ\text{C} / -4,8^\circ\text{C}$

sd-value: $94,1 \text{ m}$
Drying reserve: $359 \text{ g/m}^2\text{a}$

Thickness: $25,2 \text{ cm}$
Weight: 33 kg/m^2
Heat capacity: $31 \text{ kJ/m}^2\text{K}$

- EnEV Bestand
- BEG Einzelmaßn.
- GEG 2020/24 Bestand
- GEG 2023/24 Neubau