

Logikub - perete interior Premium

internal wall

Thermal protection

$U = 0,29 \text{ W/(m}^2\text{K)}$

Heated on both sides: No requirement*



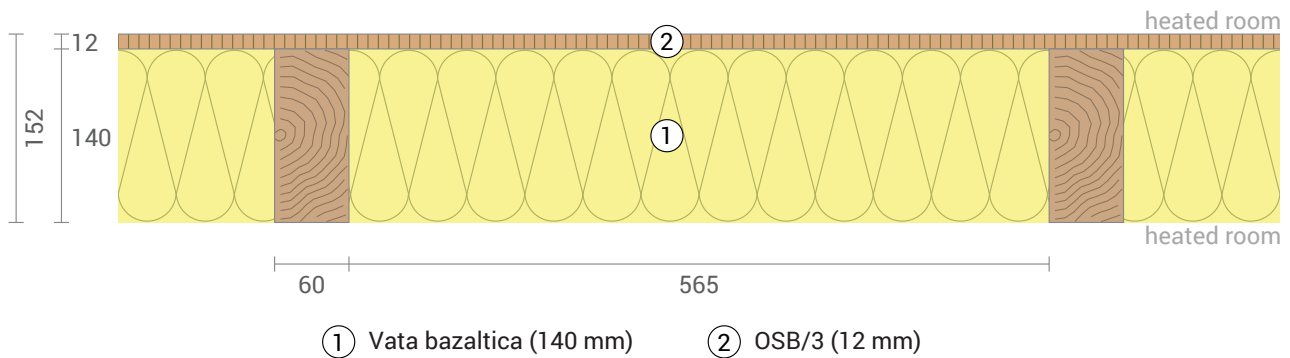
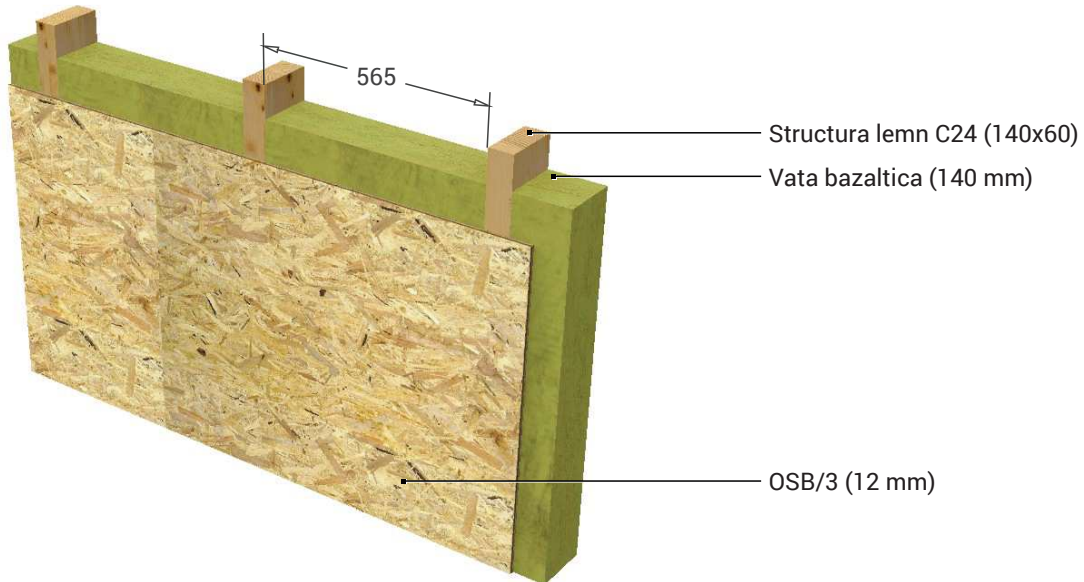
Moisture proofing

Drying reserve: $0 \text{ g/m}^2\text{a}$
(leads to devaluation)
No condensate



Heat protection

Temperature amplitude damping: 1,3
phase shift: 3,5 h
Thermal capacity inside: $8,5 \text{ kJ/m}^2\text{K}$



Inside air : $20,0^\circ\text{C} / 50\%$
Inside air 2: $20,0^\circ\text{C} / 50\%$
Surface temperature.: $20,0^\circ\text{C} / 20,0^\circ\text{C}$

sd-value: 3,9 m
Drying reserve: $0 \text{ g/m}^2\text{a}$

Thickness: 15,2 cm
Weight: 21 kg/m^2
Heat capacity: $29 \text{ kJ/m}^2\text{K}$

EnEV Bestand BEG Einzelmaßn. GEG 2020/24 Bestand GEG 2023/24 Neubau