

Logikub - planseu intermediar Premium

Basement ceiling

Thermal protection

$U = 0,20 \text{ W}/(\text{m}^2\text{K})$

Heated on both sides: No requirement*



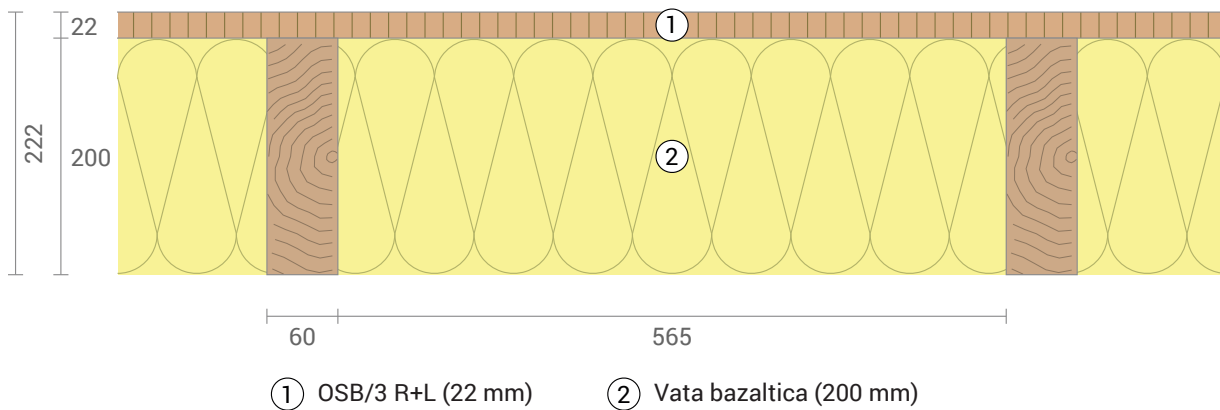
Moisture proofing

Drying reserve: 10256 g/m²a
No condensate



Heat protection

Temperature amplitude damping: 11
phase shift: 8,1 h
Thermal capacity inside: 33 kJ/m²K



Inside air : 20,0°C / 50%
Inside air 2: 20,0°C / 50%
Surface temperature.: 20,0°C / 20,0°C

sd-value: 3,8 m
Drying reserve: 10256 g/m²a

Thickness: 22,2 cm
Weight: 33 kg/m²
Heat capacity: 46 kJ/m²K

EnEV Bestand BEG Einzelmaßn. GEG 2020/24 Bestand GEG 2023/24 Neubau